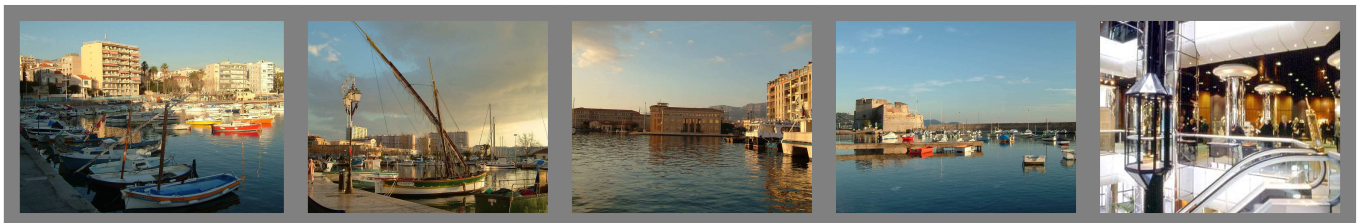


Situated in the heart of Provence-Alpes-Côte d'Azur, the Var region and the agglomeration of Toulon, economic driving force of the region enjoy a strategic position on the Mediterranean coastline.

Within the unique and secure structure of Toulon harbor, sits the headquarters of the biggest European military fleet of the Mediterranean. Moreover, Toulon has offered companies favorable conditions with the creation of the Marine Techno Park, which addresses the needs of the high-tech industry.

With around 600 000 inhabitants, Toulon Provence Méditerranée is the 9<sup>th</sup> biggest French agglomeration. Situated between Aix-Marseille and Nice-Sophia Antipolis, it is located on the Mediterranean coastline and can boast 300 days of sunshine in the year. Its privileged geographical position means that it is easily accessible:

- ▶ TGV (high-speed train) to Lyon, Paris and the Northern Europe
- ▶ Toulon-Hyères international airport
- ▶ Sea links with Italy and Corsica
- ▶ Motorway links:
  - Marseille : 60 km
  - Sophia-Antipolis: 130km



*More information on:*

**Toulon official site**  
**Conference hall of Toulon Neptune**  
**Pôle Mer PACA**  
**Council of Var**

<http://www.tpm-agglo.fr/jahia/jsp/index.jsp>  
<http://www.congresneptune.com/welcome.htm>  
<http://polemerpaca.tvt.fr/>  
<http://www.var.fr/dispatch.do>